

**2010 Flood Disaster in Kosofo – Lagos State, Nigeria.
A Summarized Report on Causes and Mitigating Measures.**

By

Uwazuruonye Justin.

NEMA GIS UNIT



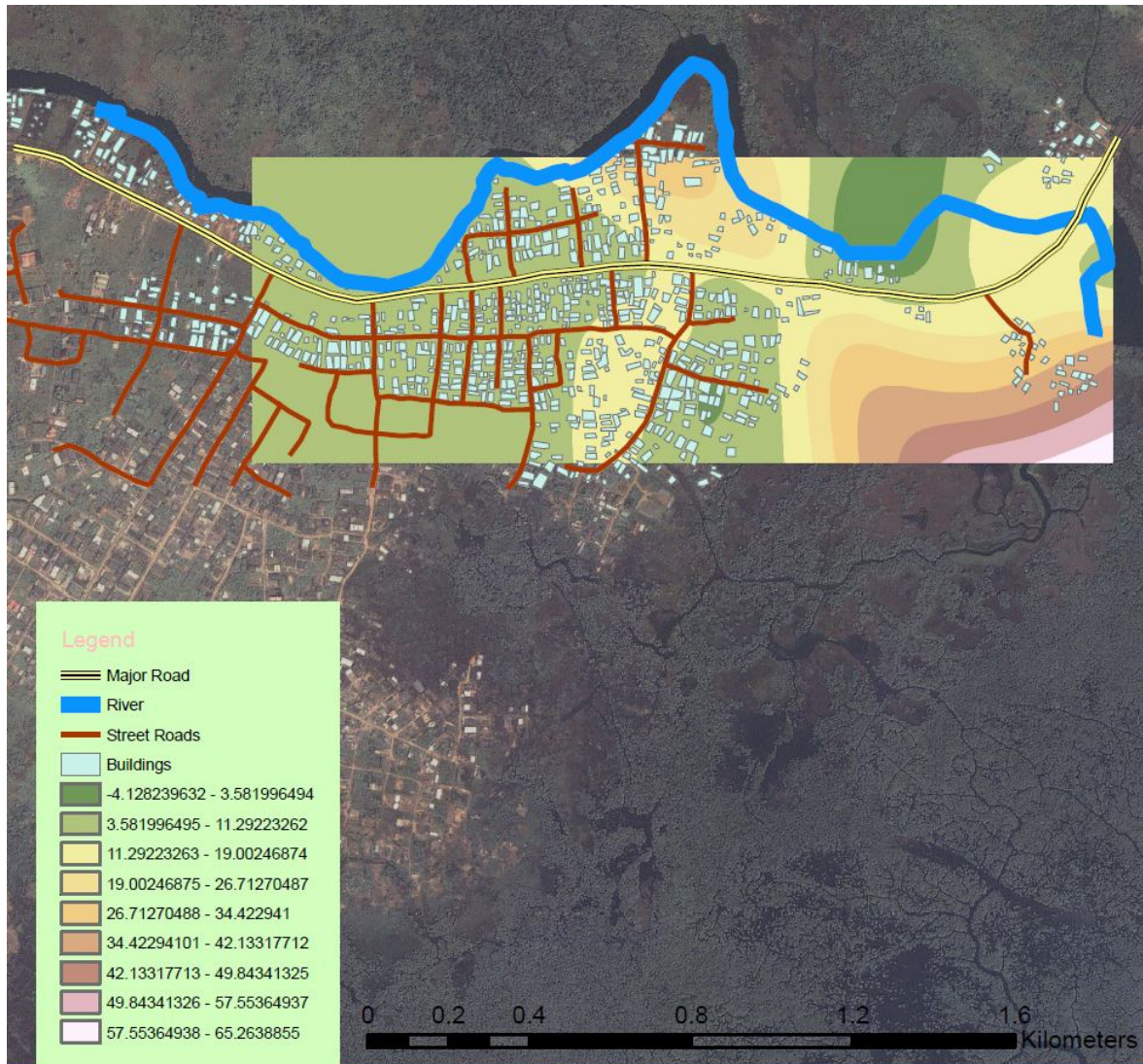


Figure 1. A synoptic view of the areas affected by flooding in 2010 @ Kosofo, Lagos State (from Satellite Image). Also overlaid is the DEM showing elevation variations.

FINDINGS.

- The area is completely a wetland. **See figure 2.**
- Annually, more wetlands are lost due to rapid urbanization being experienced in Ikorodu and its environs through sand filling.
- Most structures are raised indiscriminately.
- Wastes are disposed into the canals causing blockages. **See figure 3**
- The river/canal is heavily covered by water hyacinth/sea weeds. **See figure 4**

- GPS readings indicated that elevations of most parts of the area are less than Zero degrees. Showing that it is below sea level.



Figure 2. *Houses built on sand filled wetlands*



Figure 3. *Refuse in Canals & Water Channels.*



Figure 4. *Water hyacinth/ other Sea Weeds Covering the Canals. All Pictures were Taken December 6, 2010 by (NEMA GIS Unit)*

Mitigating Measures:

- Structural development within the wetlands should be prohibited and the natural habitat preserved.
- The water hyacinth on top of the river should be cleared by the relevant Authorities; this will allow free flow of water.
- The residents of the area should be relocated accordingly.
- Proper waste disposal mechanism should be put in place throughout the area.
- Erection of new buildings should be discouraged within the entire wetlands.
- The bridges along the roads should be reinforced to avoid sudden collapse.
- Early warning campaign and sensitization should be intensified through the media for the people to understand the dangerous situation.